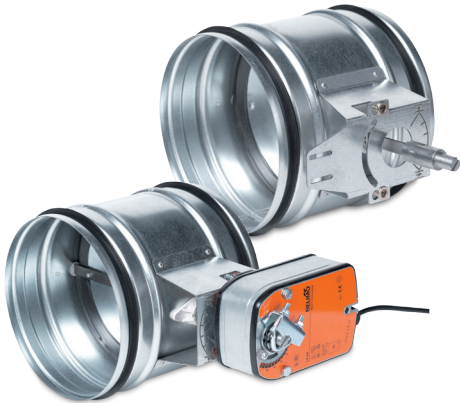


# Tune-R



## Function

Tune-R is a control and shut off damper for round ducts. It is available in various versions with blade tightness class 1 or 4 and casing tightness class A or C tested according to EN 1751. A1 version is ideal in simple installations for regulating the air volume in circular ducts. C1 version is required for duct installation with airtight requirements towards the outside of the duct or to minimize the leakage towards the outside surroundings (for example hospital patient rooms, industry applications, etc). C4 version is ideal for use as a shut off damper where different parts of the system need to be airtight separated from each other because of the dangerous materials contained in the air (surgery rooms). It can also be used as a shut off damper for air handling units, combined with a spring return actuator. In case of power outage the damper can maintain a fully closed position. The damper's special construction allows external insulation up to 50 mm. The damper can be supplied in a manual or motorized version with an integrated position indicator. The maximum allowed temperature is 100°C. The maximum duct pressure is 1000 Pa.

The basic version with a plastic manual controller and a low tightness class (A-casing, 0-blade) is also available in a diameter from 100 to 315 mm, please see the Tune-R-B catalogue for details.

## Design

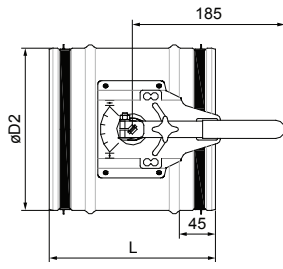
The damper is manufactured from a galvanized steel sheet and is silicone-free. All the gaskets are manufactured from black rubber. Plastic bushings are from a PPO material. All the materials are flame retardant.

## Ordering code

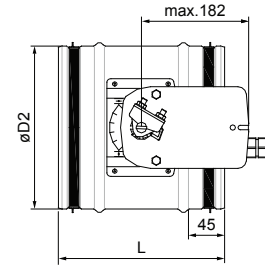
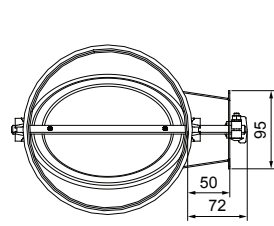
		TUNE-R -	
Size	80 - 630 mm		
Tightness class	A1	1	
	C1	2	
	C4	3	
Version	handle	H	
	preparation for actuator	M0	
	230V actuator	M1	
	24V actuator	M2	
	24V, 0-10V stepless actuator	M3	
	230V spring actuator	M4	
Version	24V spring actuator	M5	
	24V, 0-10V stepless spring actuator	M6	
Stainless steel (Optional)		A-304	
		A-316	

## Dimensions

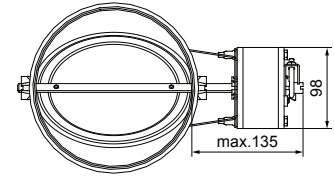
Size	L	shaft	weight	A1	C1	C4
DN	mm		kg	Nm		
80	200	12x3	0,9	2	2	2
100			1			
125			1,1			
140			1,2			
160			1,3			
180			1,4			
200			1,5			
250	300	12x3	2,1	2	2	4
280			3,2			
315			3,7			
355			4,2			
400			6,1			
450	400	8x8	8,1	4	4	8
500			9,3			
560			10,8			
630			12,7			



TUNE-R-H with manual handle

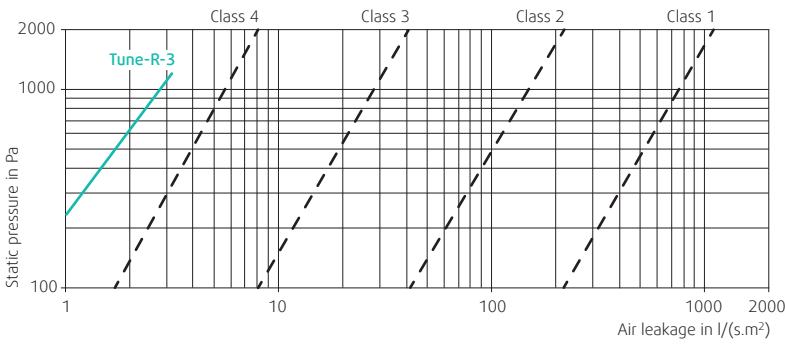


TUNE-R-M with actuator

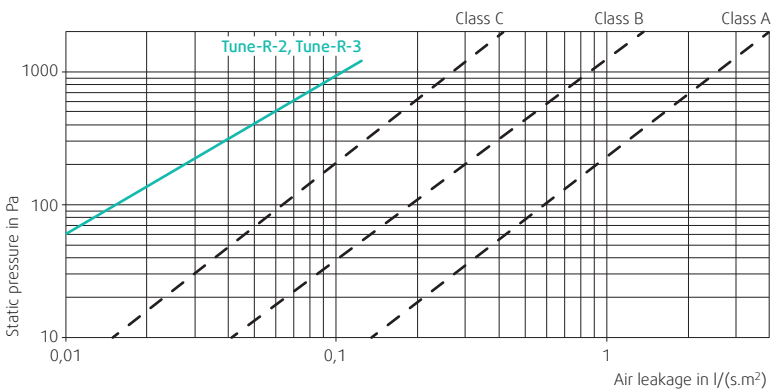


Size	Art. No							
	-2-M1	-2-M2	-2-M3	-3-M1	-3-M2	-3-M3	-3-M4	-3-M5
80	311906	311916	311926	311936	311946	311956	311966	311976
100	311907	311917	311927	311937	311947	311957	311967	311977
125	311908	311918	311928	311938	311948	311958	311968	311978
160	311909	311919	311929	311939	311949	311959	311969	311979
200	311910	311920	311930	311940	311950	311960	311970	311980
250	311911	311921	311931	311941	311951	311961	311971	311981
315	311912	311922	311932	311942	311952	311962	311972	311982
400	311913	311923	311933	311943	311953	311963	311973	311983
500	311914	311924	311934	311944	311954	311964	311974	311984
630	311915	311925	311935	311945	311955	311965	311975	311985

Articles not listed are B503



Classification of closed blade leakage according to EN 1751 standard



Classification of case leakage according to EN 1751 standard